

50



JEPPESEN
& PONS *JP*



The Arcona 50, the first Arcona by Jeppesen & Pons, is proudly made in Sweden. A perfect blend of Scandinavian design and Swedish craftsmanship, the new flagship of the Arcona fleet sets new standards in yachting excellence.

Design: **Jeppesen & Pons**
CE Category: **A-Ocean**
LOA (inc. optional bowsprit): **15.80m**
LH: **14.99m**
LWL: **13.98m**
Beam: **4.60m**
Draft (Deep keel - standard): **2.95m**
Draft options: **2.50m/2.20m**
Ballast: **4600kg/5200kg/6000kg**
Displacement: **13900kg**
(Light boat, no extra equipment)
Engine: **Yanmar 4JH80CR**
Sail Drive: **SD60**

SAIL AREA

Main: **86m²**
Jib: **56m²**
Jib 110% (optional): **65m²**
Asymmetric: **222m²**

EXTERIOR DESIGN

The beautiful hull of this 50ft Arcona is designed for safe and comfortable long distance performance cruising and will deliver in all wind conditions.

The uncluttered decks and spacious cockpit with an open transom and twin wheels make her easy to handle shorthanded under sail, for maximum sailing pleasure. In a first for Arcona, the Arcona 50 has twin rudders providing more control in the water. There is a dinghy garage which is another first for Arcona.

New to Arcona are also the L-shaped cockpit benches and the two cockpit tables, which enables guests and crew to move around the cockpit more easily under sail.

She has a three-spreader mast with discontinuous rod rigging plus double hydraulic backstay cylinders with a central pumpstation.

A carbon mast and furling carbon boom are available as an upgrade. The standard central padeye holding the single mainsheet block is recessed below the cockpit floor, with an electrically operated mainsheet traveller track, also recessed below the cockpit floor, available as an upgrade.





INTERIOR DESIGN

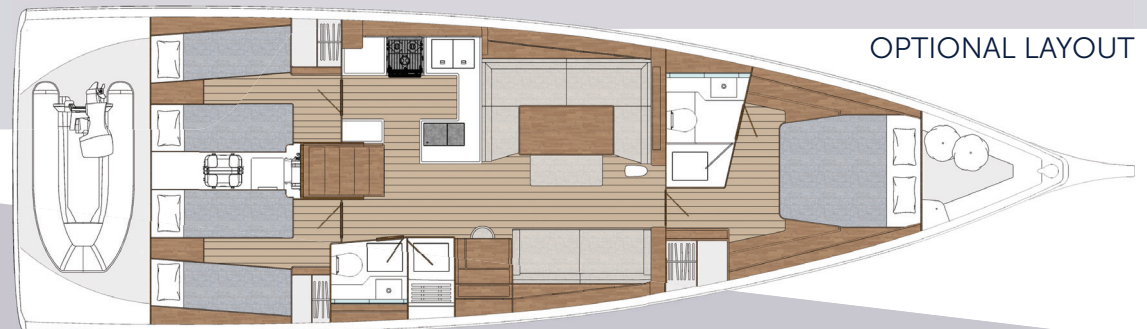
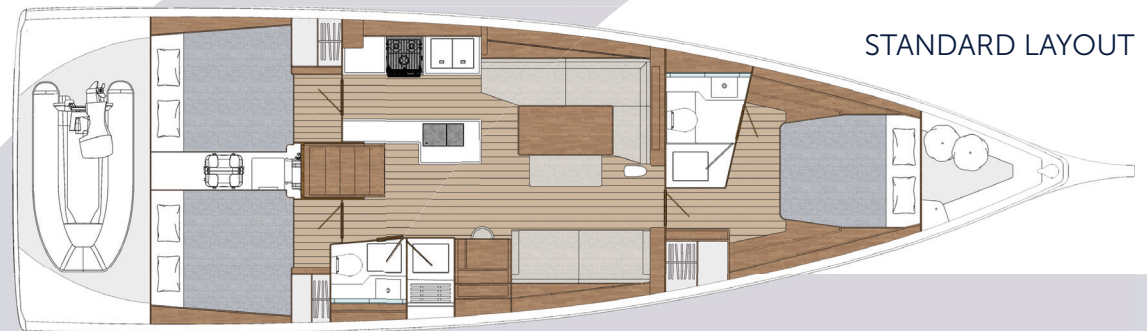
Below decks, there is a minimalist Scandinavian elegance with a focus on every detail. The interior is in Khaya Mahogany as standard. The option to have Light Oak is also available.

As seen in superyachts, a large proportion of the interior's woodwork is cored to maximise weight-saving without compromising on strength or on the aesthetics.

The owners' cabin features a kingsize bed, lots of storage and an en-suite with separate shower. There is the option to have a larger wardrobe or a seat. For guests there is an additional heads with a separate shower area. The two aft cabins can be a double or you can choose to have a convertible modular twin configuration with an infiller*.

The standard galley layout allows for easy access to the L-shaped saloon seating. There is the option to have U-shaped seating and additional galley workspace too. The saloon table has an additional seat/coffee table to starboard that can be moved and locked into position.

Lots of natural light floods in below deck from the hull windows and flush hatches which gives a more spacious feel.



**This enables you to convert the twin berths into doubles with an infill for each cabin.*



Arcona
y a c h t s

345

385

415

435

465

50

arcona-benelux.nl

+31 (0)85 0060 194

info@arcona-benelux.nl

Arcona Yachts AB reserves the right to alter the design, price or equipment without any notice in advance. Please note: the images in this brochure may show optional features and equipment that are not included in the standard specification.